

## KEY CAPABILITIES

### Speed

- 20k Spindle
- Rapids 2400ipm

### Accuracy

- Repeatability .0013 microns (.00000005 in)

### Production

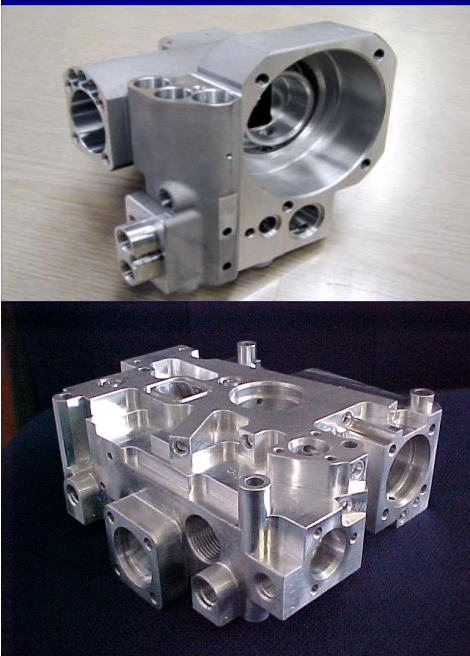
- 33 pallet APC for maximum lights out machining

### Flexibility

- 314 tools for maximum mix of different parts

### Size

- Milling workzone 15.7 in diameter 12.4 in tall parts



## HIGH PRODUCTIVITY AND HIGH PRECISION 5-AXIS MILLING

05/04/2018 - Baum Precision Machining Inc. is pleased to announce the installation of another new highly sophisticated 5-Axis Machining Center, the Yasda PX30i. This is our 3<sup>rd</sup> multi-pallet 5 axis machining center. This new high-tech piece of equipment is sitting on a specially poured 31" thick pad of concrete to enable accuracy and quality unmatched by any machine in its class. This significant investment creates both additional capacity and increased efficiency for the manufacturing of highly complex, close tolerance aerospace, defense and medical parts. It will help us to improve machining cycles, reduce human error, and allow us to be running parts >90% of the time 24-7 with minimal labor. This results in competitive prices, improved on-time delivery, and unbeatable quality to our customers.

YASDA CNC PRECISION CENTER™

**PX 30i**  
5-Axis



Watch the machine in action: <https://youtu.be/Kw03UqphdKU>